

Example of specific use of the Materials for guided regeneration



1. It begins to fill the space of the large medial sinus with hydroxyapatite slow reabsorption.



2. Screw the implants that converge and that come into contact from inside with the bone wall side.



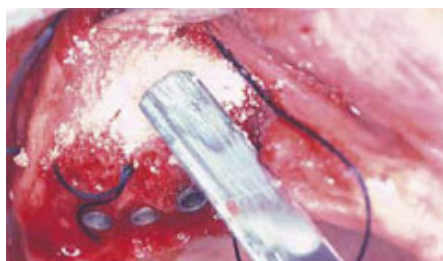
3. The screwing clockwise runs with the readers, who engage in the inner hole eccentric implant.



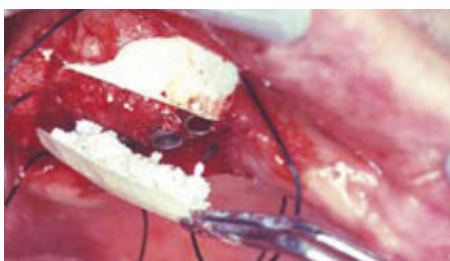
4. At the level of the tuber maxillae implants are left to protrude a few fractions of a millimeter on the crest.



5. Apply further hydroxyapatite filling it up amongst the implants, using a plastic spatula not to contaminate them.



6. Compact further hydroxyapatite applied with dry gauzes, and remove any excess with a spatula.



7. Apply a collagen membrane to help the colonization of the underlying space by osteoblasts.



8. Apply hydroxyapatite and membranes also on the crestal end of the implants, to prevent the postsurgical atrophy.