

PERIODONTAL SURGERY: GUIDED REGENERATION IN INTRABONY POCKETS

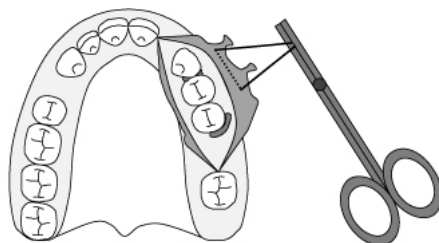
Specific indications and instructions for Guided Regeneration Material System

COLLAGENE AT® IDROSSILAPATITE AT® IDROSSILAPATITE MICROMETRICA AT®

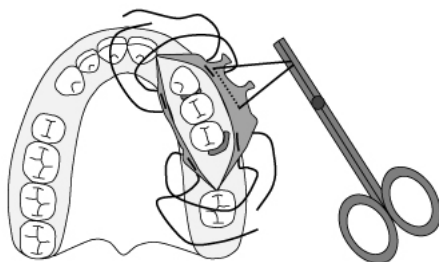
The filling of intrabony pockets with Idrossilapatite AT® and the placing of Collagene AT® membranes permits the growth of new periodontal and bone tissues, due to the barrier effect which avoids the soft epithelial and connective tissue cells migration.

Guided bone regeneration and guided periodontal tissue regeneration are as greater as deeper and narrower are the intrabony pockets.

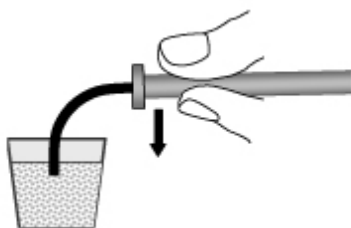
1. Reflect the flaps and completely expose the intrabony pockets.



2. Remove all the soft tissue inside the pockets.
3. Completely clean and polish the dental walls of the pockets.
4. Pass the sutures without tying.

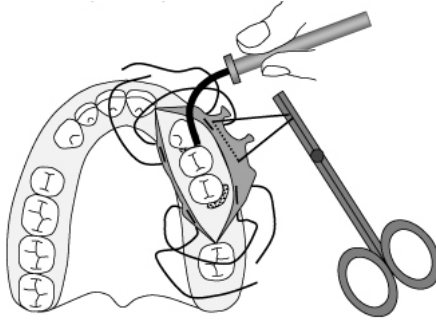


5. Prepare Idrossilapatite AT®.

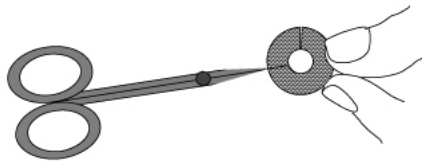


IMPLANT SURGERY: APPLICATION OF REGENERATION MATERIALS TO PREVENT POST-OPERATIVE RIDGE ATROPHY

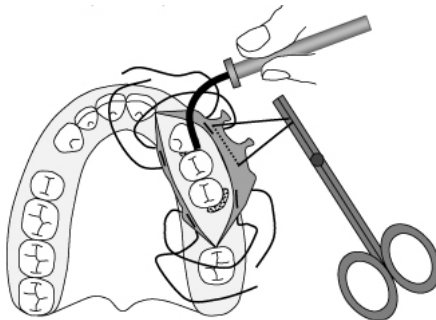
6. Introduce the Idrossilapatite AT® pressing with a flat condenser and dry gauzes till the complete filling of the pockets.



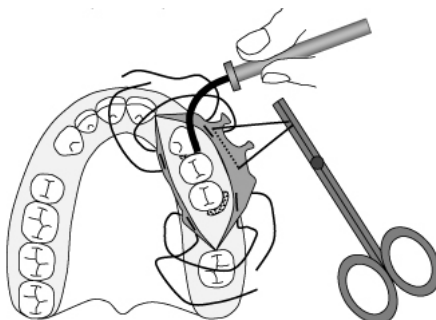
7. Cut a circular Collagene AT® membrane wide enough to cover the bony and dental walls of the pockets for about two millimeters.



8. Apply and adapt the membranes with dry blunt instruments and dry gauzes.



9. Tie and complete the sutures. The flap must completely cover the membranes.



IMPLANT SURGERY:

APPLICATION OF REGENERATION MATERIALS TO PREVENT POST-OPERATIVE RIDGE ATROPHY

10. Protect the surgical zone with a surgical dressing.

11. Prescribe a pharmacological treatment and advise to avoid chewing in the operated zone till sutures removal.

After one week remove surgical dressing and sutures.

Warning: if wound dehiscence occurs, let wound heal applying more surgical dressings.



per info:

☎ 049/681123

✉ info@odopguizza.it

www.odopguizza.it

CENTRO DI ODONTOIATRIA OPERATIVA S.R.L. via Guizza, 309 - 35125 Padova PD